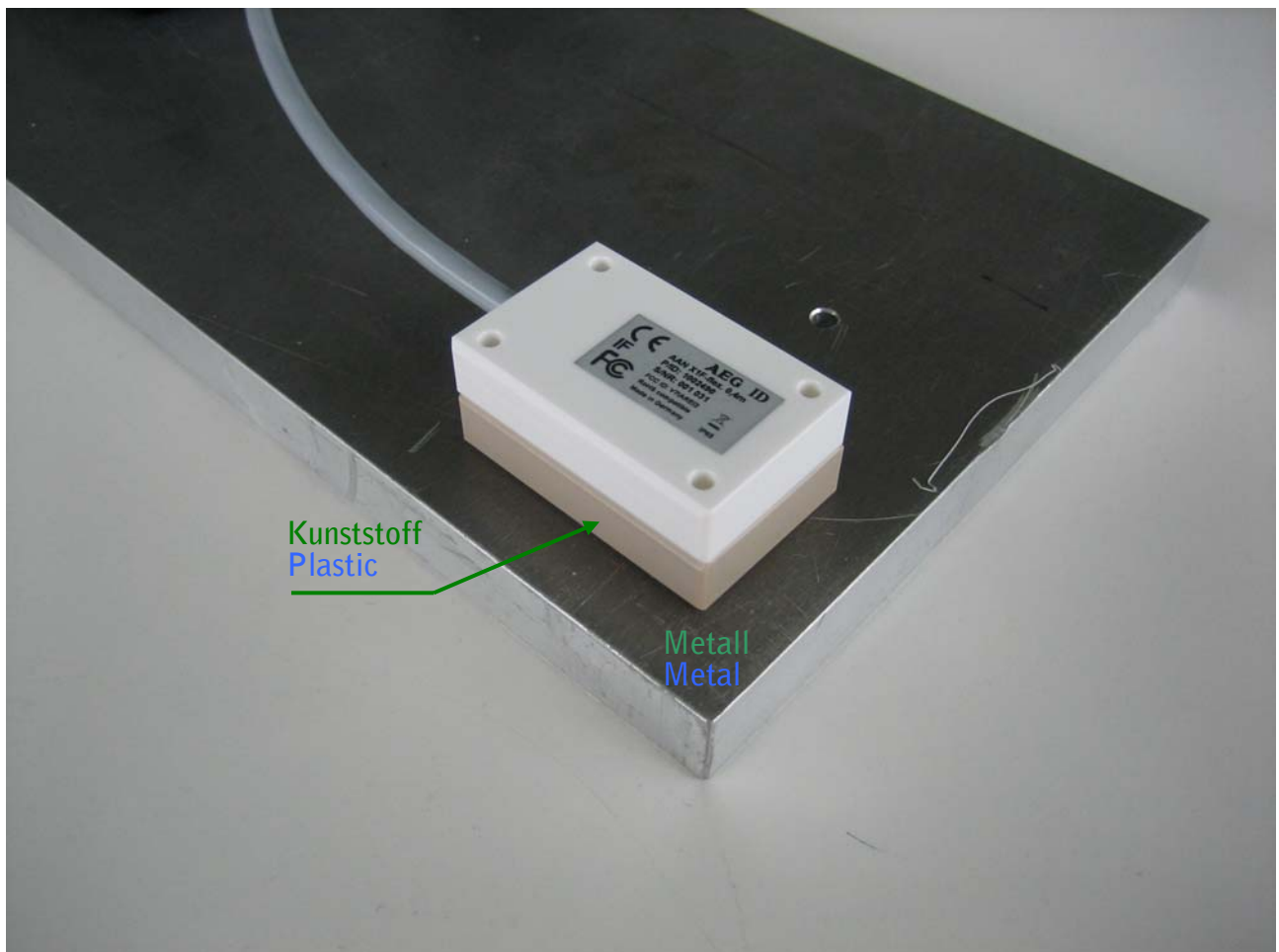
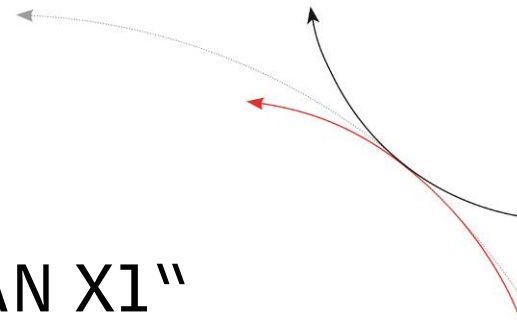


Montage der RFID Antenne „AAN X1“ Mounting of RFID antenna „AAN X1“

Montage immer mit nichtleitendem Abstandshalter zu Metall und anderen leitenden Flächen.
Mindeststärke des Abstandshalters: 10mm.

Always mount the antenna using a non-conductive spacer (plastic) between antenna and conductive surface (e.g. metal).
Minimum thickness of non-conductive spacer: 10mm.

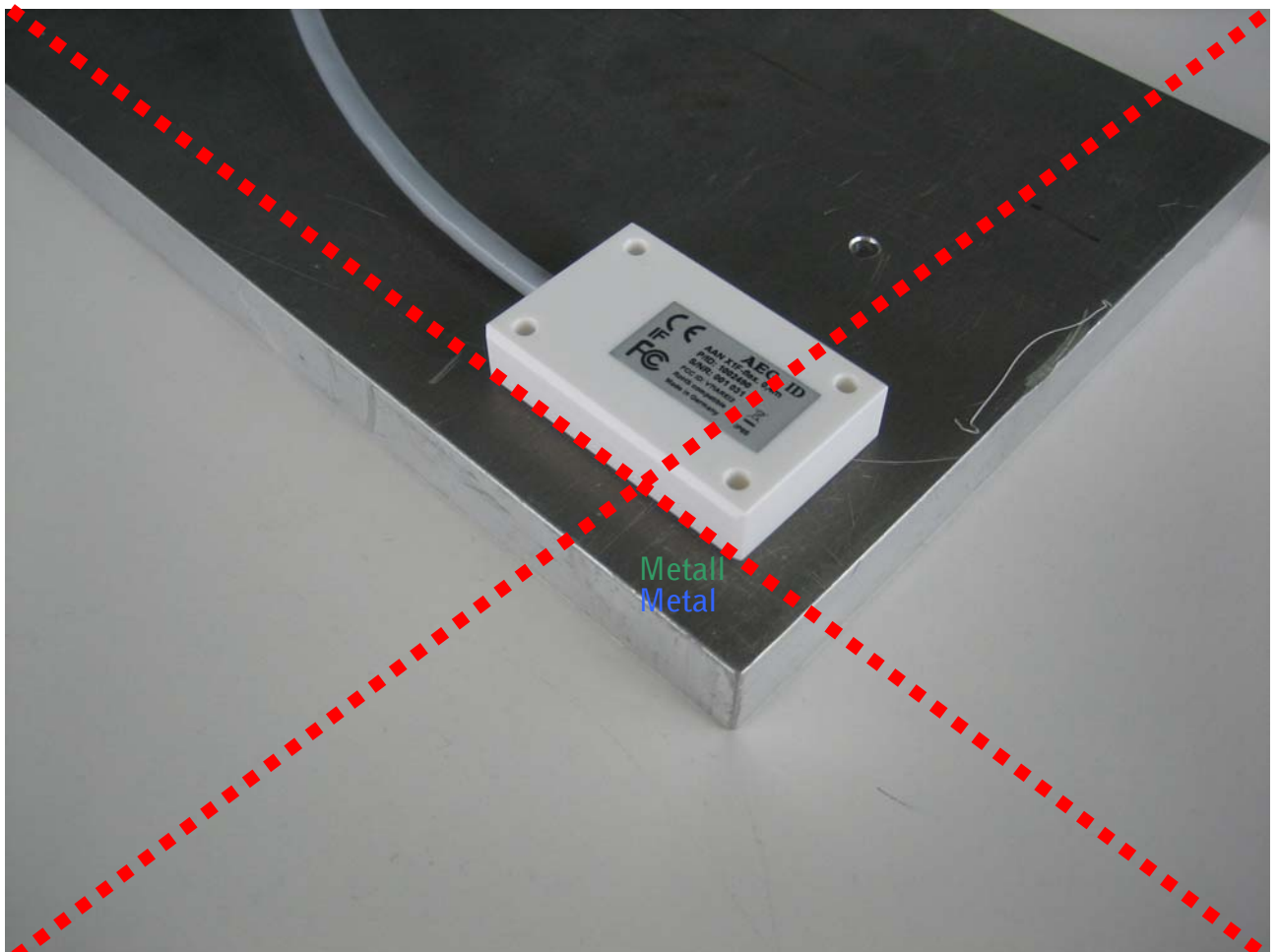


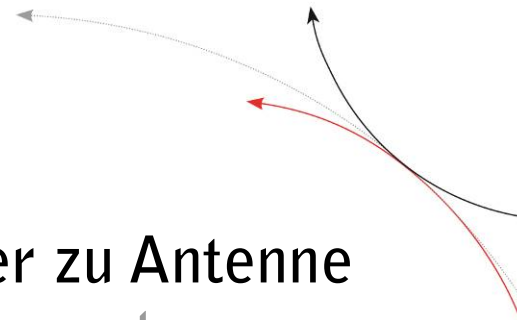


Montage der RFID Antenne „AAN X1“ Mounting of RFID antenna „AAN X1“

Die Antenne unter keinen Umständen direkt auf oder in Metall montieren.

Never mount the antenna directly onto or in metal.

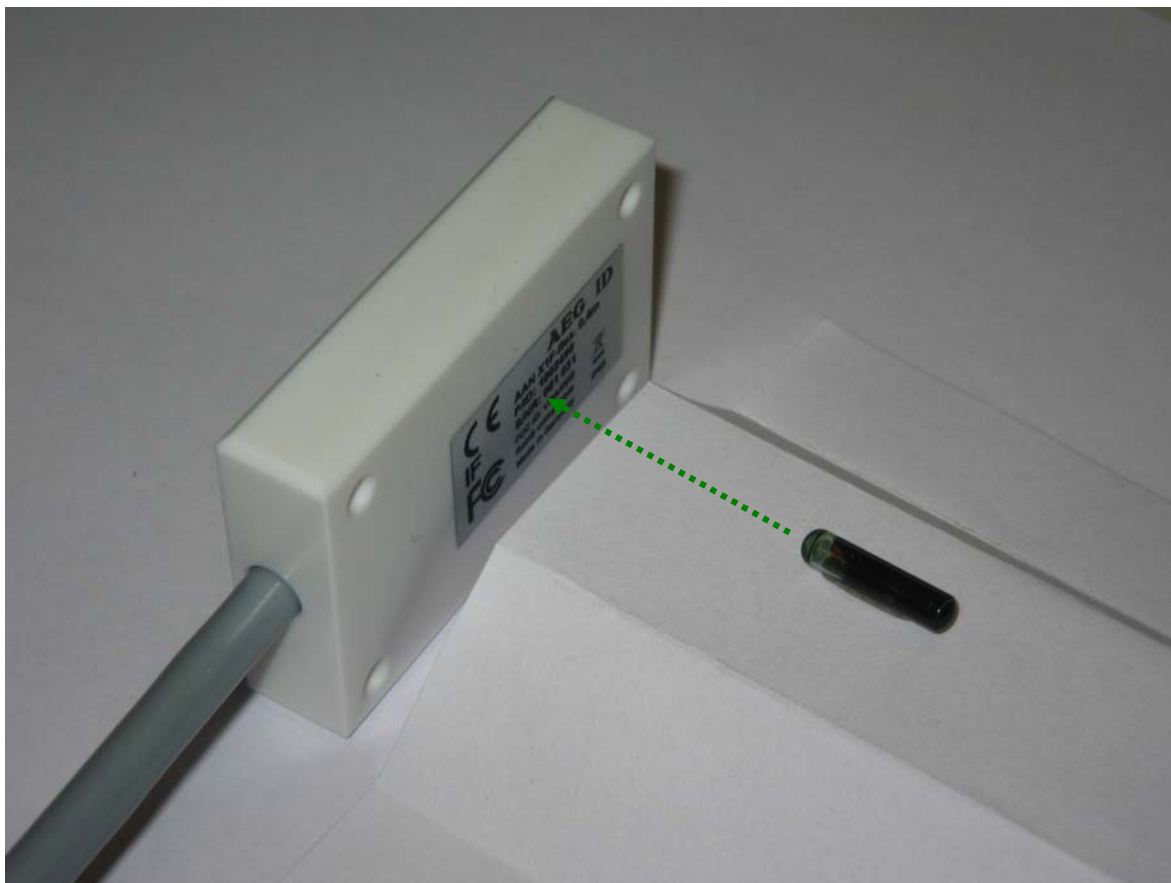




Optimale Ausrichtung Transponder zu Antenne Optimum orientation transponder - antenna

Antenne | Antenna AAN X1L

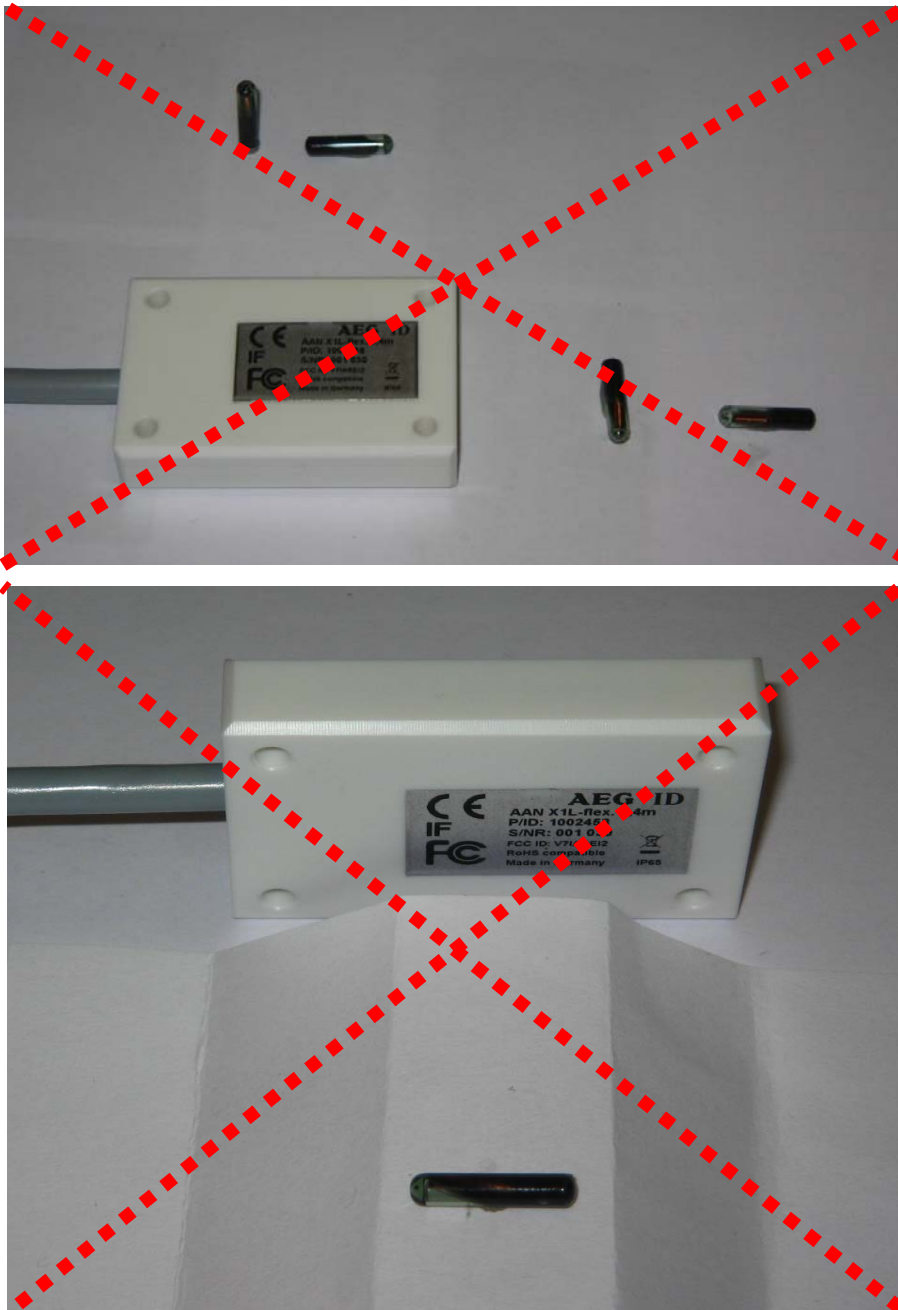
Glasrohrtransponder | Glasstube transponder

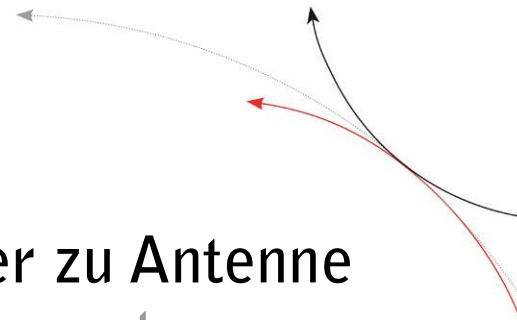


Folgende Ausrichtungen nie verwenden
Never use following orientations

Antenne | Antenna AAN X1L

Glasrohrtransponder | Glasstube transponder

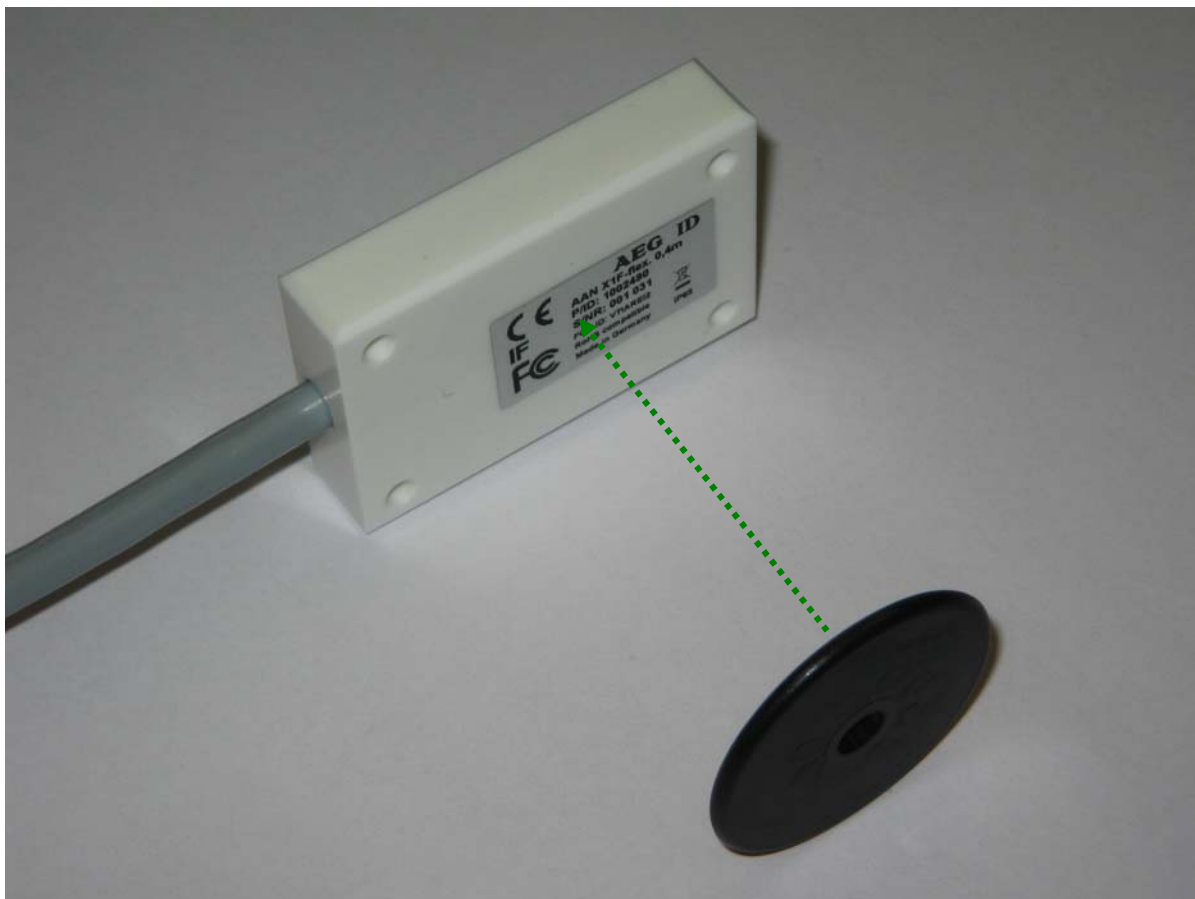


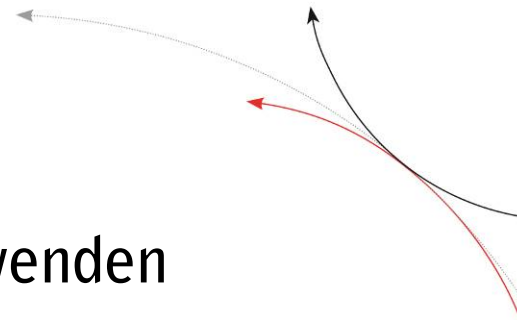


Optimale Ausrichtung Transponder zu Antenne Optimum orientation transponder - antenna

Antenne | Antenna AAN X1L

Disktransponder | Disk transponder

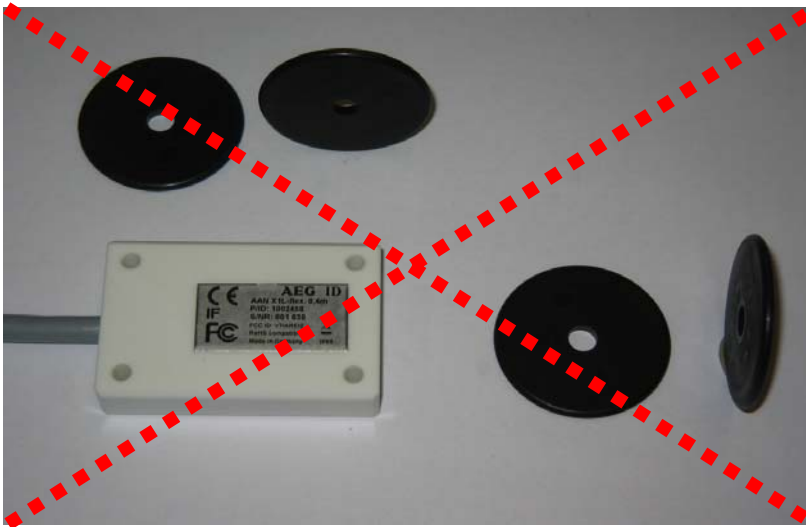


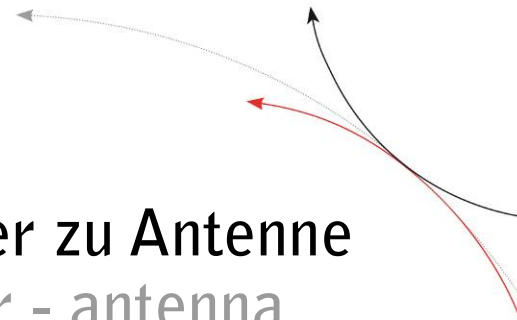


Folgende Ausrichtungen nie verwenden
Never use following orientations

Antenne | Antenna AAN X1L

Disktransponder | Disk transponder

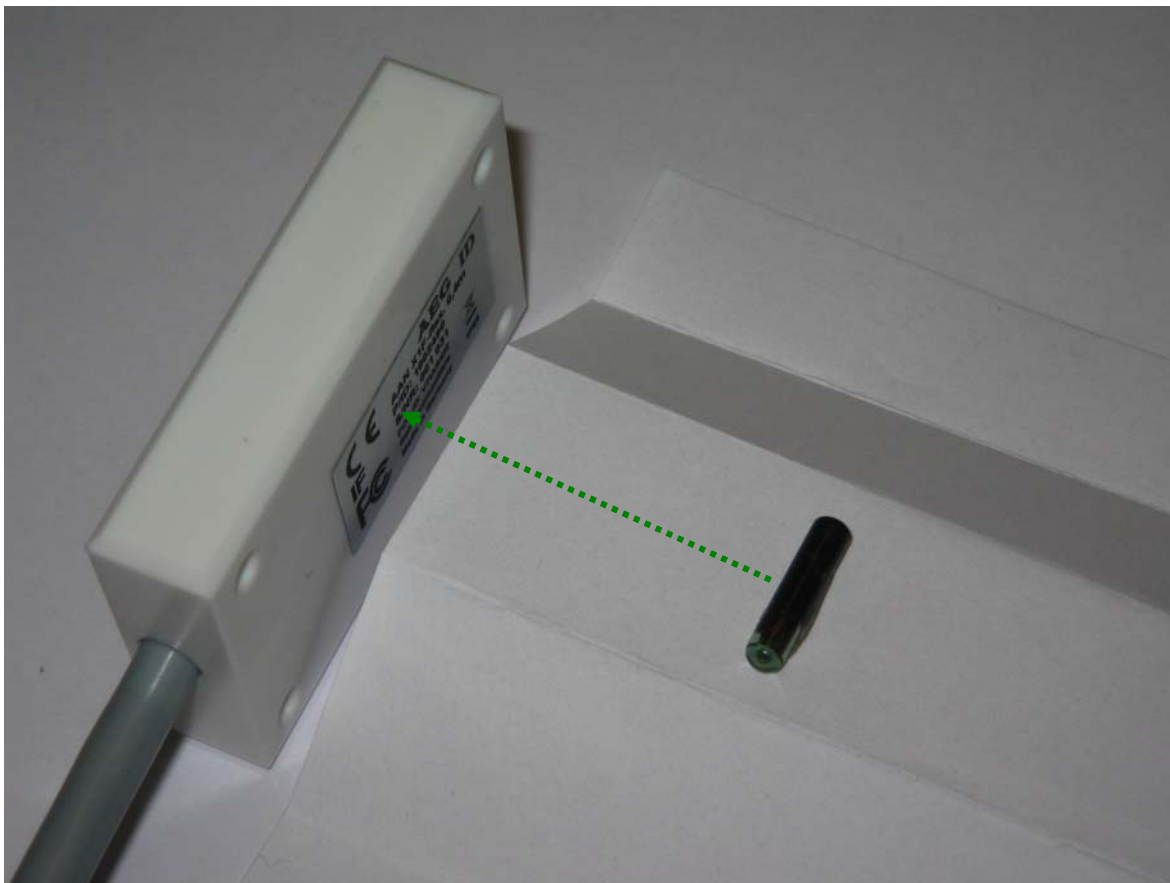


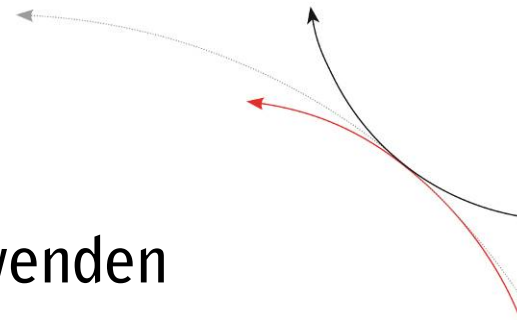


Optimale Ausrichtung Transponder zu Antenne Optimum orientation transponder - antenna

Antenne | Antenna AAN X1F

Glasrohrtransponder | Glasstube transponder



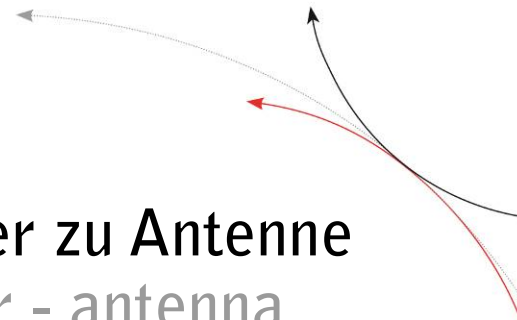


Folgende Ausrichtungen nie verwenden
Never use following orientations

Antenne | Antenna AAN X1F

Glasrohrtransponder | Glasstube transponder

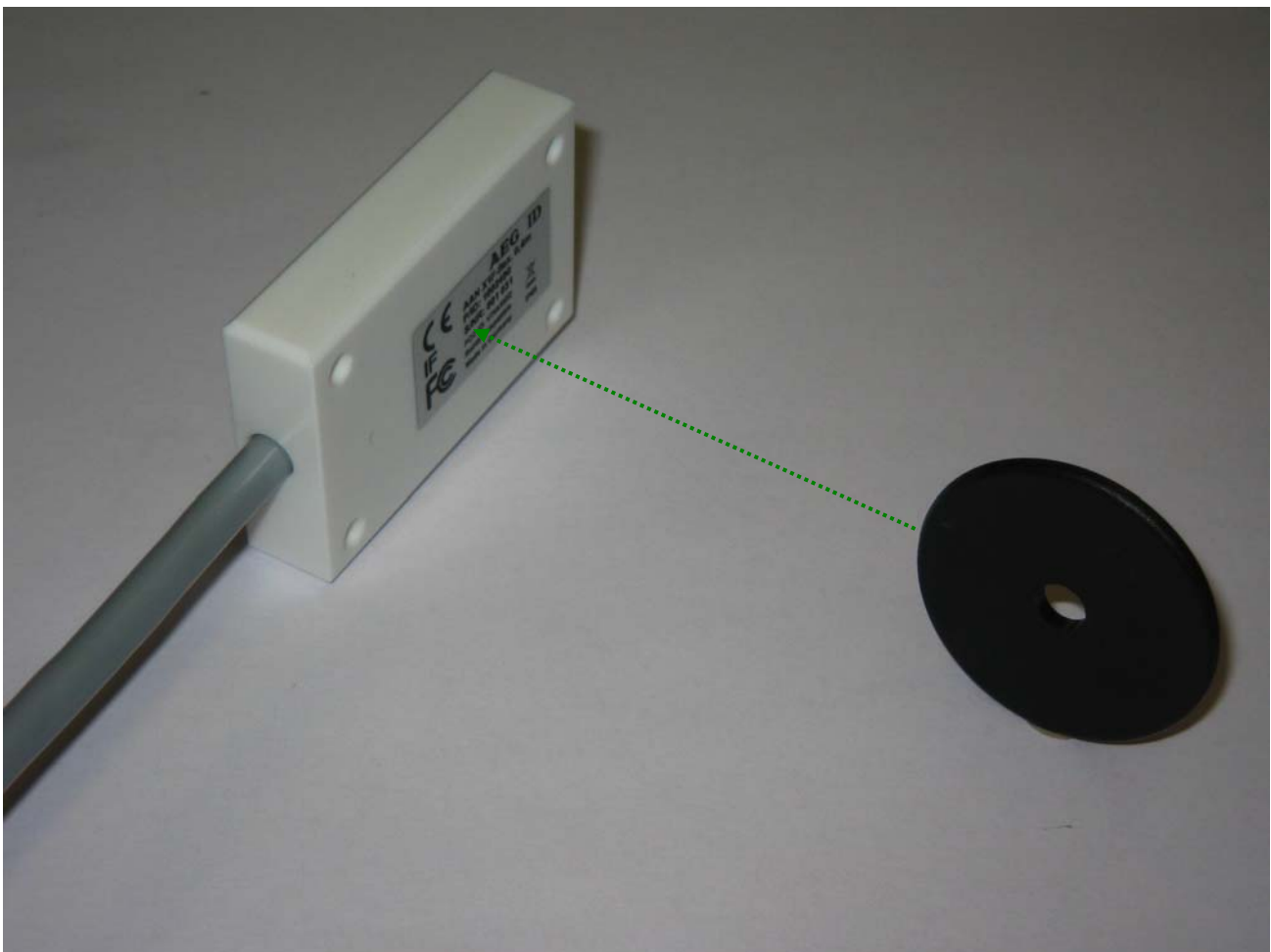




Optimale Ausrichtung Transponder zu Antenne Optimum orientation transponder - antenna

Antenne | Antenna AAN X1F

Disktransponder | Disk transponder



Folgende Ausrichtungen nie verwenden
Never use following orientations

Antenne | Antenna AAN X1F

Disktransponder | Disk transponder

