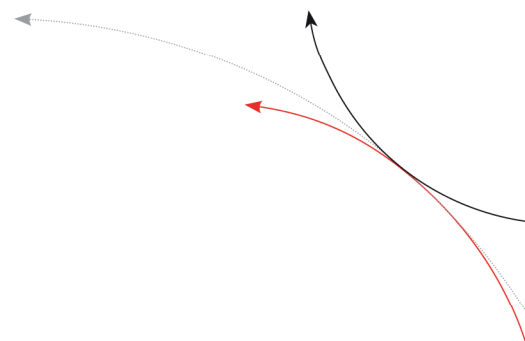


Operating instruction for the COM 2 Keyboard program



Index

1	Application	3
2	Installation, System	3
3	Function	4
4	Adjustment	5
5	Notification of changes	7
6	Contacts	7

1 Application

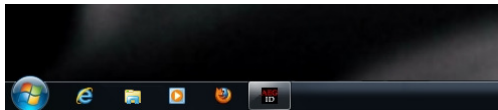
The software is simulating keyboard input, using the received data from the chosen serial interface. It is designed to run in the background. If the cursor is set to a input field, in an excel table element, in a text document or something similar, the data received with the serial interface is typed in there.

2 Installation, System

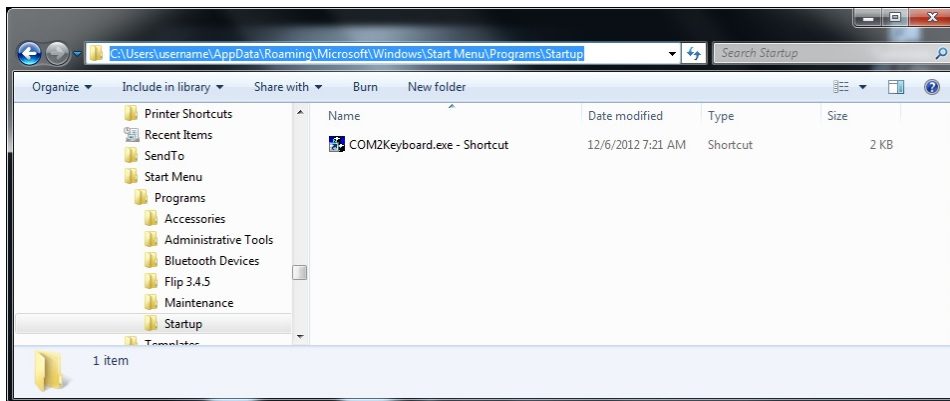
System: Developed for Windows XP, 7, ...

Installation: Not necessary.

Start: The program can be started directly from the CD. In this case changed parameters can not be saved when the program is closed. When it is started new, they have to be changed again. That is not the problem if you copy the software to the hard disk of your PC (Please copy the whole application folder). Parameter changes last, because they can be saved there in the related init file.
The program is automatically minimized to the menu bar, when it is started.



If you want to use the features of the program, but don't want to look after it, it can be reasonable to copy a shortcut in the autostart folder.



3 Function

In the field „Received Data:“ the telegrams received with the serial interface are shown.

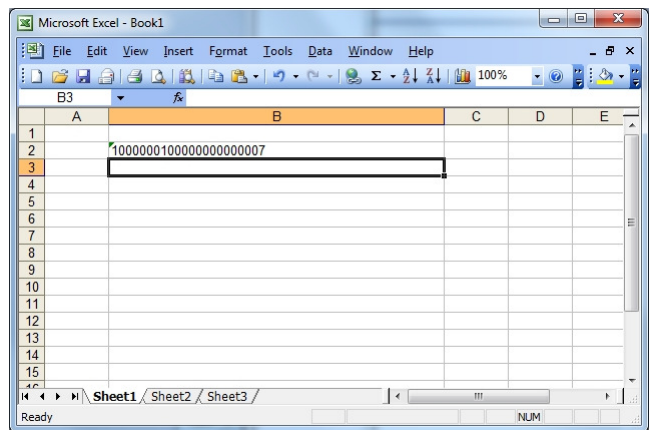
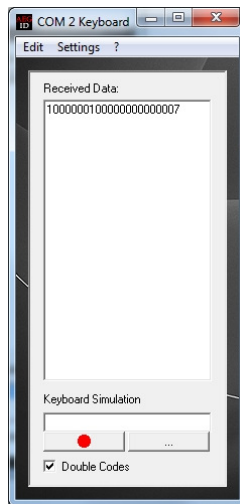
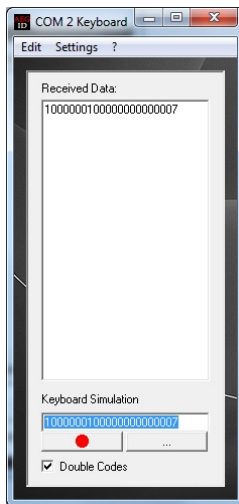
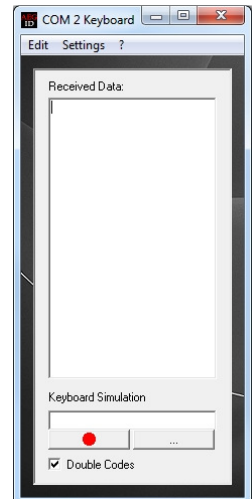
If the program is in the foreground the keyboard simulation is typed in the „Keyboard Simulation“ line.

If for example an excel file is in the foreground and the focus is on an table element, data is typed in there.



This works for all PC applications.

The way special characters are interpreted depends on the application.

Excel for example changes the column if a tab is typed, a carriage return is a change of row, the function key F12 will save the excel file.

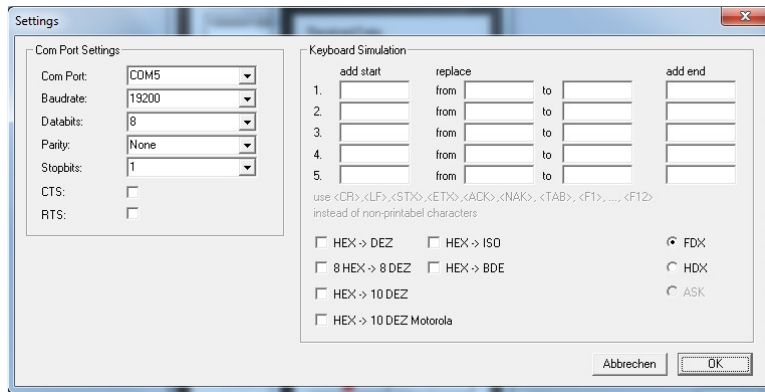


With the record button  everything converted in keyboard simulation can be logged.

The record ends with pushing the pause button . For this purpose a *.csv file is used. Name and location can be chosen with the  button.

With the check button „Double Codes“ several equal telegrams are set to keyboard simulation, not only one time.

4 Adjustment



With the menu point „Settings“ a dialog with the parameters of the program can be opened.

The block „Com Port Settings“ defines the interface parameters.

Standard parameters of our readers are 19200 baud, 8 data bits, no parity, 1 stop bit and no hardware handshake.

With the block „Keyboard Simulation“ the received telegram can be changed before keyboard simulation takes place.

With the 5 input fields „add start“ characters can be added in the front.

With the 5 input fields „add end“ characters can be added at the end.

With the 5 input fields „form“ „to“ characters can be replaced.

The special characters CR, LF, STX, ... have to be typed in the notation „<CR>“, „<LF>“, „<STX>“,....

With the check- und radio buttons diverse conversions are possible:

HEX→DEZ, FDX:	04207AEFAF 17724795642	conversion hexadecimal to decimal
HEX→DEZ, HDX:	04207AEFAF 5F575E0420 409487672352	change bit order conversion hexadecimal to decimal
8 HEX → 8 DEZ:	82015F03B9BC0611 B9BC0611 3116107281 16107281	use right 8 characters of the hexadecimal number conversion hexadecimal to decimal use right 8 characters of the decimal number
HEX → 10 DEZ, FDX:	04207AEFAF 17724795642 7724795642	conversion hexadecimal to decimal use right 10 characters of the decimal number

HEX → 10 DEZ Motorola:	04207AEAFA FAEA7A2004 1077675696132 7675696132	change from Motorola to Intel notation conversion hexadecimal to decimal use right 10 characters of the decimal number
HEX → ISO, FDX:	09C80000039F0001 999 000000005008	change hexadecimal in ISO decimal format
HEX → ISO, HDX:	8000F580003F5F00 00FAFC0001AF0001 982 000004153088	change bit order change hexadecimal in ISO decimal format
HEX → BDE, FDX:	8000028000000200 005 0000001	change hexadecimal in BDE decimal format
HEX → BDE, HDX:	004000000402A553 CAA5402000000200 000 0000512	change bit order change hexadecimal in BDE decimal format

5 Notification of changes

Revision	Date	Description of changes	Editor
001	06.12.2012	First Revision	MK

6 Contacts

To improve our products, as well as its documentation is our permanent effort.
For any questions, feedback or comments please call:

Tel.: ++49 (0)731-140088-0
Fax: ++49 (0)731-140088-9000
e-mail: sales@aeqid.de
http:// www.aeqid.de